

🏠 No. 3, Xialita Road, Wuzhong District, Suzhou
☎ +86 (512) 6777 4527
✉ marketing@mambaroll.com

Mambaroll reserves the right to make modifications to the technical characteristics and performance of all its products at any time.
Technical information, dimensions, data and features are for reference only.
The final right of interpretation belongs to Mambaroll Drive Technology (Suzhou) Co., Ltd.

MAMBAROLL CONVEYOR MODULES

www.mambaroll.com

Jun 2024
V1.0

CONVEYOR MODULE

Roller conveyor module can transport materials with heavy weights or bear machinery with large impact loads. Suitable for various types of boxes, bags, pallets and other parts. And transportation of goods, bulk materials, small or irregular items need to be placed in the tray, conveying on a plate or in a turnover box.

The conveying module has a simple structure, high reliability, and is easy to use and maintain. It is suitable for conveying items with a flat bottom, mainly composed of rollers, frames, brackets, drive parts, etc. It has the characteristics of large conveying capacity, fast speed, light operation, and can achieve multi-variety co-linear diversion conveying.

- HIGH-SPEED DIVERTING MODULE
- TRANSFER
- DIVERT/MERGE ROLLER CONVEYOR
- EDGE CONVEYOR
- ROLLER CONVEYOR CURVE
- BELT CURVE
- SORTING CART



Modular design for easy addition and deletion of items

Mambaroll drive module presents modular design, when the project product mix needs to be changed, there is no need to significantly adjust the original conveyor module, as long as the local fine-tuning to meet the project's functionality can be increased or decreased. This saves on-site labor costs and is more in line with the needs of the project.



Flexibility in project realignment

Mambaroll drive modules are multi-functional and multi-applicable, with a high degree of adaptability between linear, turning, merging, shifting, and pendulum modules, which can be adjusted according to the requirements of customer projects. All modules are highly modularized decentralized drive, so that the conveyor module body can do any increase or decrease and combination.



Maximum practicality

Mambaroll Drive's modules feature highly efficient drives and a compact mechanical design to ensure maximum utility for customers' projects.



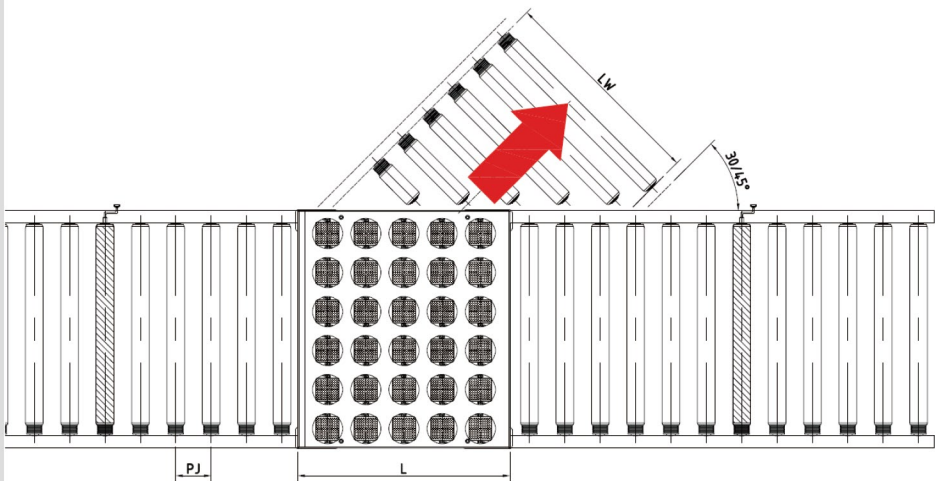
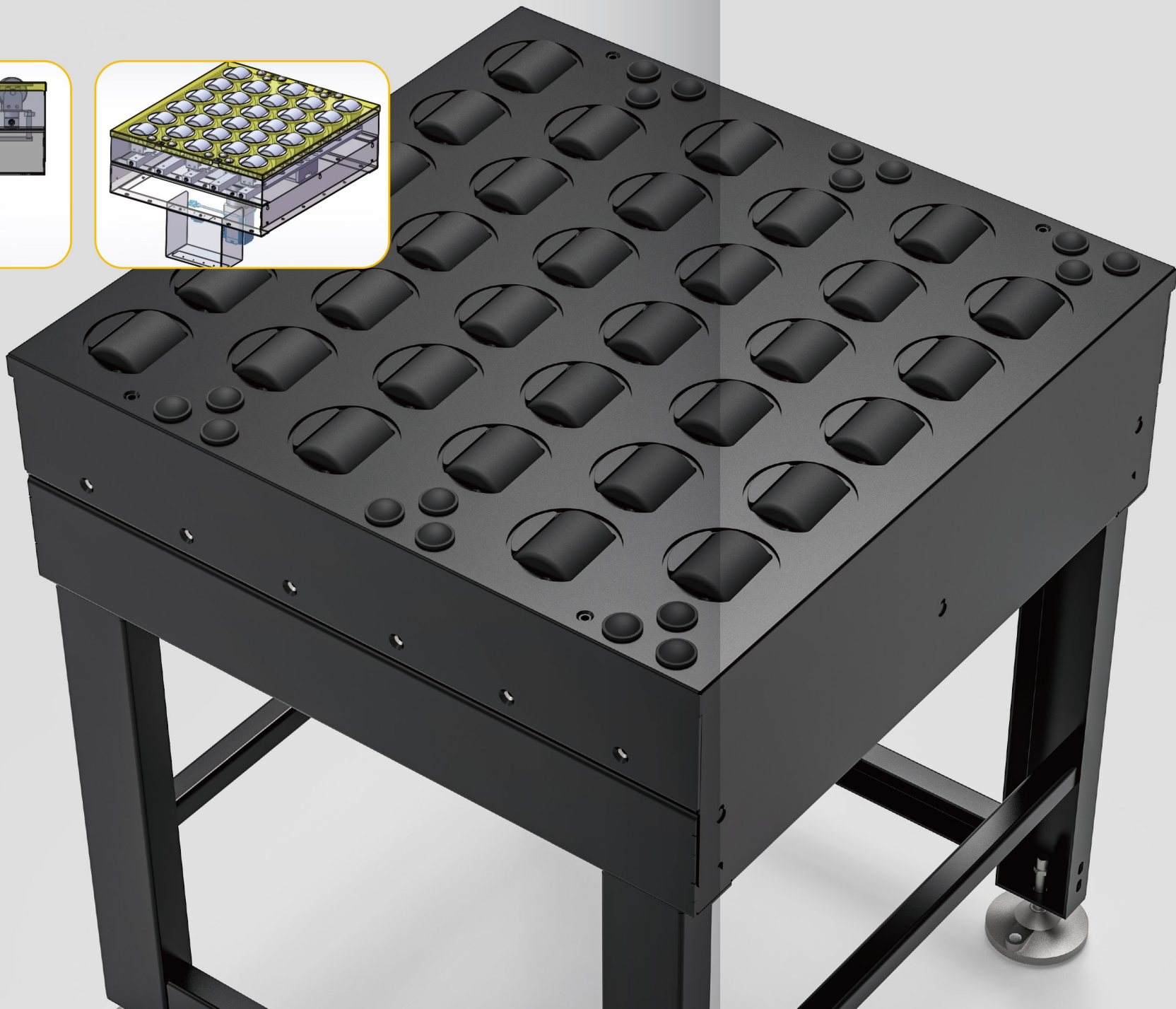
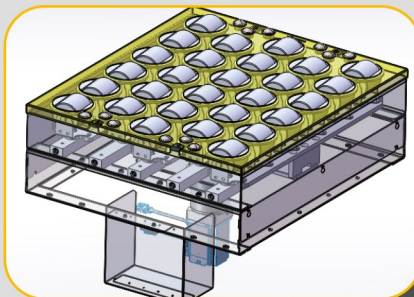
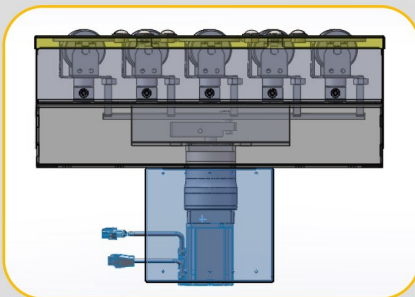
Efficient Drive
Energy saving and cost reduction

Mambaroll drive roller utilize 24v drive technology for zero-pressure accumulation conveying scenarios and consume more than 50% less energy than traditional motor-driven conveyor modules.



HIGH-SPEED DIVERTING MODULE

High-speed diverting module mainly consists of conveying roller, synchronized steering controller, transmission device, frame and other components; operation based on the management system issued by the instructions and information recognition, steering controller to change the running direction of the conveying roller, the goods will be moved to the diversion of the conveyor module.



PRODUCT ADVANTAGES

- ※ Suitable for sorting medium and large goods: it can carry up to 60kg for transportation;
- ※ Independent module, flexible configuration: modular design, rapid maintenance and replacement, without affecting the whole;
- ※ Flexible sorting, low breakage rate: high sorting stability, soft movements, low damage to goods.
- ※ Long service life, cost-effective: equipment wear resistance, long service life, less maintenance needs, low investment costs, cost-effective;
- ※ High-speed sorting, saving labor: sorting time up to 6000 pieces / hour, greatly improving the efficiency of sorting, saving labor costs;
- ※ Stable structure, efficient control: built-in external rotor direct-drive brushless motor, the torque is smoother, lower noise, more reliable.

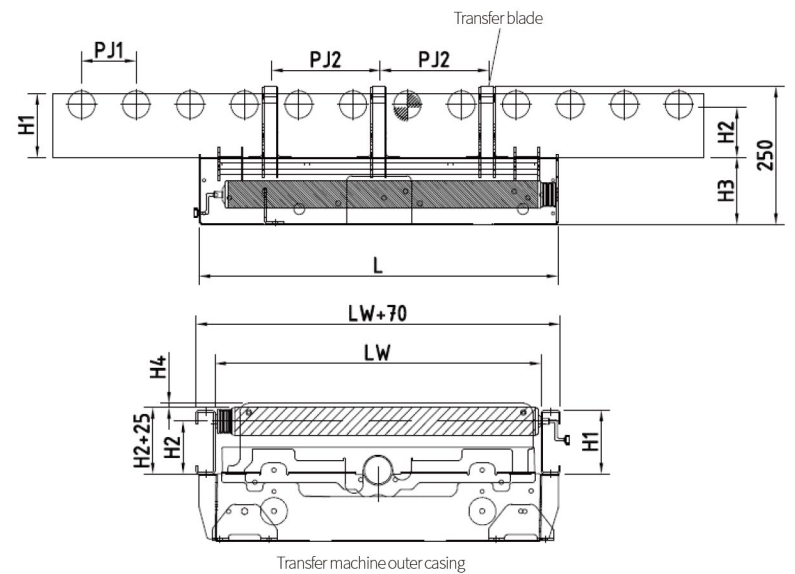
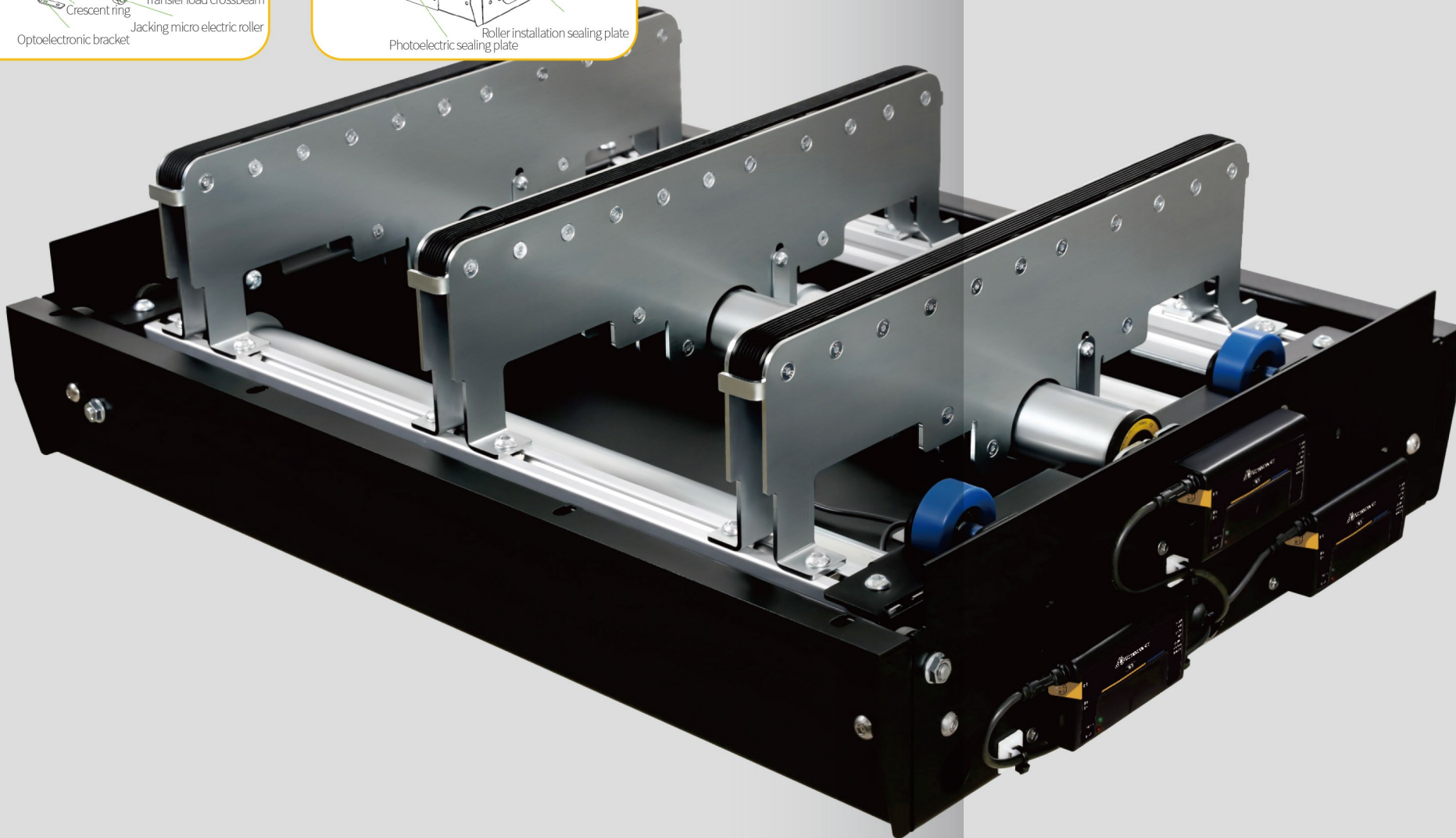
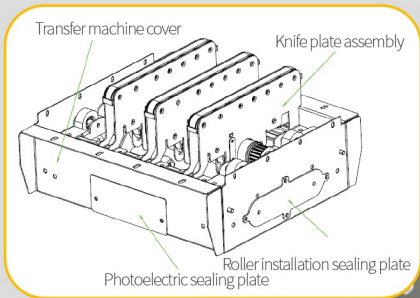
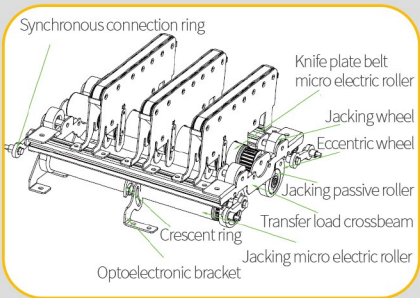
DEVICE OUTPUT PARAMETER TABLE

Classifications	Parameter Term	Numerical Value
Material Information	Material Type	Box/carton/covered/non-standard
	Material Size	Max/Min
	Material Weight	Max/Min
Performance Information	Conveying speed	60m/min
	Conveying efficiency	6000p/h
	Sorting Angle	30°/45°
Device Information	Installation form	Floor standing/Hanging
	Equipment form	Built-in/Freestanding
	Equipment Size	LW600~L740
	Docking conveyor module size	LW600
	With or without support legs	Yes/No
	With or without control cabinet	Yes/No

TRANSFER

The transfer is used to turn or merge the suitable materials onto the roller track at an angle of 90°, and the direction of the conveyed goods is changed, i.e., after the product passes through the transfer machine, its side will become the walking direction.

The transfer mainly consists of: transporter knife plate, jacking mechanism, control several parts.



PRODUCT ADVANTAGES

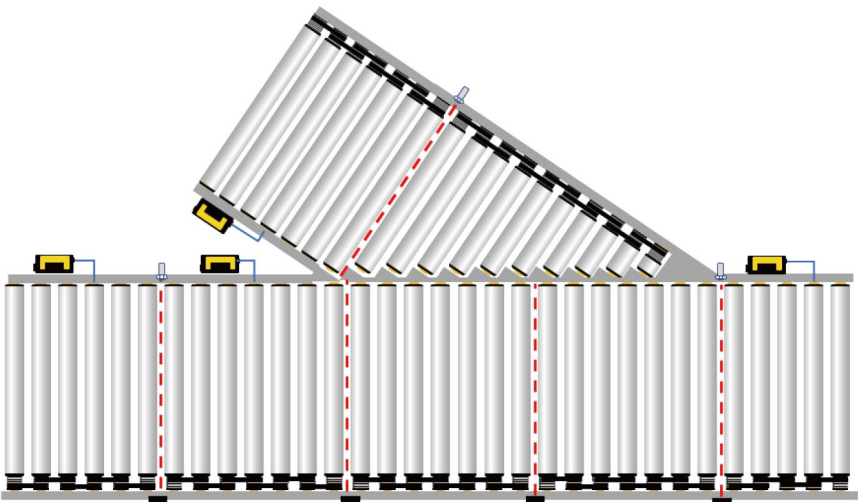
- ※ Modular design, simple structure
- ※ Space-saving 90° conveying
- ※ High load capacity, precise positioning, and smooth conveying
- ※ Easy disassembly and maintenance
- ※ 24V DC power supply for safety, energy saving and efficiency.
- ※ Fast switching speed, suitable for a wide range of scenarios.
- ※ Dimensions can be adapted to the line body, height 220/250mm two choices, suitable for different space requirements.

DEVICE OUTPUT PARAMETER TABLE

Classifications	Parameter Term	Numerical Value
Material Information	Material Type	Box/carton/covered/non-standard
	Material Size	Max/Min
	Material Weight	Max/Min
Performance Information	Conveying speed	30m/min
	Conveying efficiency	1200p/h
	Roller material	Galvanized/stainless steel/clad/knurled (default galvanized)
Device Information	Equipment Size	LW600*L740mm
	Mounting hole spacing	635mm
	Adaptive cable body width	LW=600mm
	Maximum permissible load	50kg
	Conveying speed	30m/min
	Equipment power	35W*3
	Conveying efficiency	1200p/h
	Roller material	Carbon steel galvanized
	Material of transfer knife plate	Galvanized (optional stainless steel)
	Number of transfer belts	3pcs
	Lifting stroke	20mm
	Color	RAL7035-gray (customizable)

DIVERT/MERGE ROLLER CONVEYOR

The divert/merge roller conveyor module can convert and change the direction of the conveyor module in the logistics conveyor system. When there is a demand for diverting/merging, this equipment can effectively sort and exchange the conveyor carrier. The split is generally used with a sorter machine, and the commonly used sorting angles are 30 ° and 45 °.



DEVICE OUTPUT PARAMETER SHEET -CARBON STEEL BEZEL

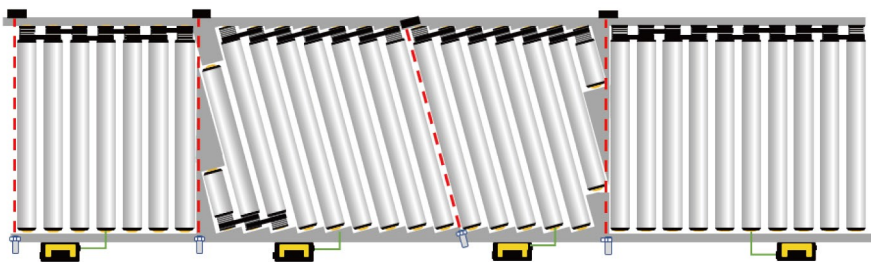
Equipment parameters	Numerical Value
Speed	0~1m/s
Load	0~50kg
Power	35w/50w
Roller pitch	25/30 times
Body size	115*35*2mm (standard edge)
Drive type	Multi-Wedge Belt
Roller installation method	Spring Hexagonal Shaft
Drum material	Stainless steel
Body color	RAL7035
Multi-wedge belt specification	2PJ
Antistatic	yes

DEVICE OUTPUT PARAMETER SHEET -ALUMINUM BEZEL

Equipment parameters	Numerical Value
Speed	0~1m/s
Load	0~50kg
Power	35w/50w
Roller pitch	60~150mm
Body size	150*40*3mm (120*40mm)
Drive type	Multi-Wedge Belt
Roller installation method	Spring Hexagonal Shaft
Drum material	Stainless steel
Body color	RAL7035
Multi-wedge belt specification	2PJ
Antistatic	yes

EDGE CONVEYOR

The edge conveyor module is used in conjunction with the linear conveying module in the logistics conveying system. It is generally used to correct the conveying posture of packages/boxes. By cutting and installing the diagonally, it can ensure the consistency of the goods and facilitate the operation of process equipment such as scan code, packaging,etc.



DEVICE OUTPUT PARAMETER SHEET -CARBON STEEL BEZEL

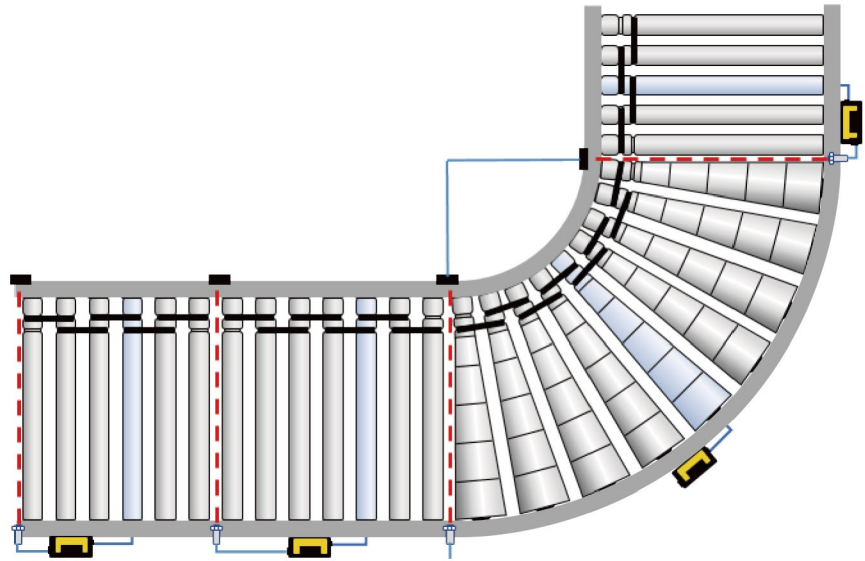
Equipment parameters	Numerical Value
Speed	0~1m/s
Load	0~50kg
Power	35w/50w
Leaning angle	7°/15°
Fuselage size	115*35*2mm (standard edge)
Drive type	Multi-Wedge Belt
Roller installation method	Spring Hexagonal Shaft
Drum material	Stainless steel
Body color	RAL7035
Multi-wedge belt specification	2PJ
Antistatic	yes

DEVICE OUTPUT PARAMETER SHEET -ALUMINUM BEZEL

Equipment parameters	Numerical Value
Speed	0~1m/s
Load	0~50kg
Power	35w/50w
Leaning angle	7°/15°
Fuselage size	150*40*3mm (120*40mm)
Drive type	Multi-Wedge Belt
Roller installation method	Spring Hexagonal Shaft
Drum material	Stainless steel
Body color	RAL7035
Multi-wedge belt specification	2PJ
Antistatic	yes

ROLLER CONVEYOR CURVE

Roller conveyor curve module is a complete set of logistics conveyor system plays a role in making the conveyor package / box turn, when due to process changes, site constraints, etc., the need to cover the conveyor direction will be used, there are 30 °, 45 °, 60 °, 90 ° and so on a variety of angles.



DEVICE OUTPUT PARAMETER SHEET - CARBON STEEL BEZEL

Equipment parameters	Numerical Value
Speed	0~1m/s
Load	0~50kg
Power	35w/50w
Turning Angle	30°/45°/60°/90°
Fuselage size	115*35*2mm (standard edge)
Drive mode	Multi-Wedge/O-Belt
Roller installation method	Spring Hexagonal Shaft
Drum material	Stainless steel
Body color	RAL7035
Multi-wedge belt specification	2PJ
Antistatic	yes

DEVICE OUTPUT PARAMETER SHEET - ALUMINUM BEZEL

Equipment parameters	Numerical Value
Speed	0~1m/s
Load	0~50kg
Power	35w/50w
Turning Angle	30°/45°/60°/90°
Fuselage size	150*40*3mm (120*40mm)
Drive mode	Multi-Wedge/O-Belt
Roller installation method	Spring Hexagonal Shaft
Drum material	Stainless steel
Body color	RAL7035
Multi-wedge belt specification	2PJ
Antistatic	yes

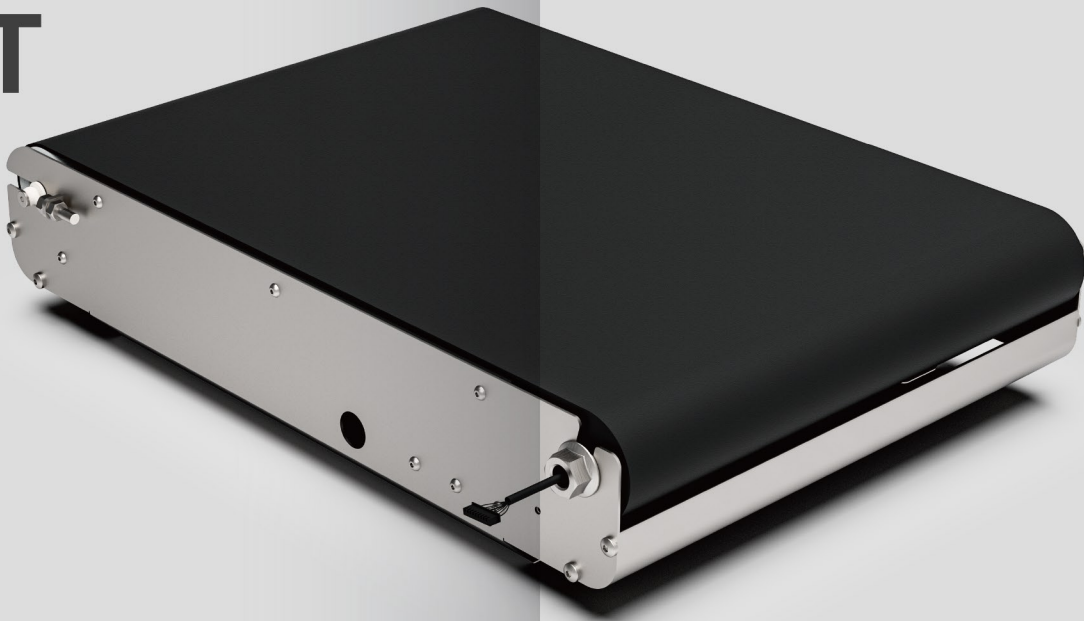
BELT CURVE

The belt curve is driven by a special drive chain on the outer edge of the belt. A special connecting ring attaches the belt drive chain to a series of precisely machined holes in the outer edge of the belt. This chain drive is unaffected by changing loads, tensions, temperatures, humidity and foreign substances between the bottom of the belt and the end rollers when conditions change.



SORTING CART

It is a high-speed running conveyor sorting equipment, which can be applied to crossbelt sorters, AGV/AMR and other mobile robots.



STANDARD CONVEYOR MODULE

-MEDIUM & HEAVY DUTY SERIES (PRODUCT PARAMETERS)

Equipment parameters	Numerical Value
Maximum Load	Conveyor module slider bed 75kg/m without rollers, 112kg/m with single rollers, 225kg/m with double rollers. 112kg/m with single roller, 225kg/m with double roller, 275kg with 4.2m OCR, conveying speed 3.30kg/m
Maximum load on outer diameter (OCR)	275kg at 4.2m OCR, conveying speed 3.30kg/m
Ambient Temperature	-15~55°C
Motorization rate	0.75~5.6kw
Tapered redirection roller big end diameter	Approx. 190mm
Height of conveyor module body	Approx. 305mm
Conveyor module body material	Pickled steel plate 3.0mmt
Side plate height	50~600mm
Side plate material	Steel, 2.5mmt
Turning machine angle	15°~180°
Inner Bay Radius	0.34~4.20m
Conveying surface width	Depends on inner bay (wide band between side panels)
Conveying height (T.O.B)	Minimum approx. 305mm

SORTING CART PARAMETERS

Equipment parameters	Numerical Value
Specification	483*330*139(mm)
(Device length * Belt width * Device height)	630*430*139 (mm)
Maximum Speed	2.5m/s (speed adjustable)
Maximum load	50kg
Driving method	Brushless direct-drive drum motor drive
Taper redirecting roller big end diameter	Approx. 305mm
Body material	Steel body
Belt material	Diamond pattern belt